

TECHNICAL DATA SHEET

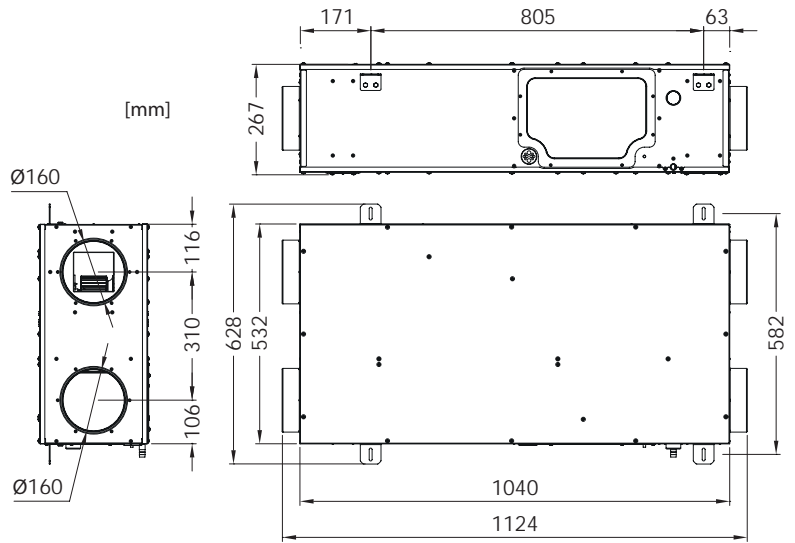


Description	Size (wxhxd)	Cod.
CHR 200 FC	1124x267x628 mm	7045524

Accessories / Complements		Cod.
CONTROLLER	ONE CONTROL PANEL	7045561
CONDENSATE DRAIN KIT (*)	SF-M 13	3600401
	SF-P	7045502

(*) no. 1 Mandatory condensate drain kit.

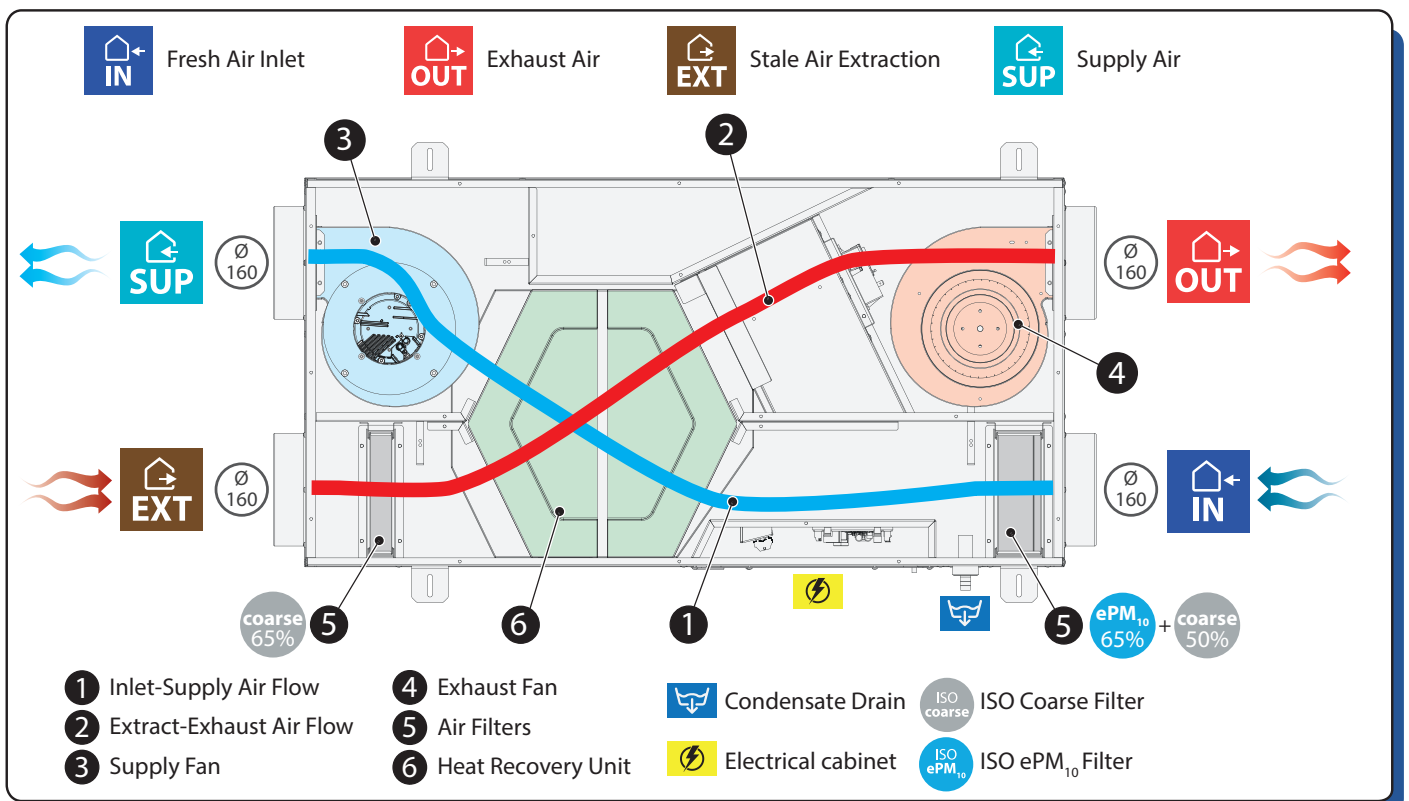
Optional order separately		Cod.
STD ELECTRICAL DUCT HEATER	RE-S 075-160	7045567
0-10 ELECTRICAL DUCT HEATER	RE-M 075-160	7045568
WATER BATTERY	BA-C 16-160	7045588
MODULATING VALVE Ø ½"		7045562



DESCRIPTION

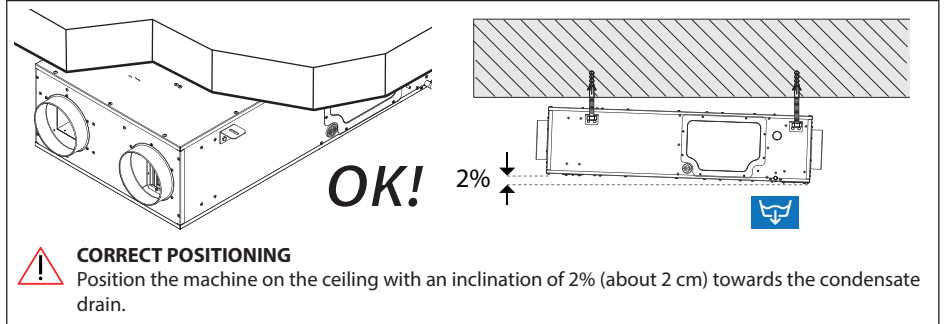
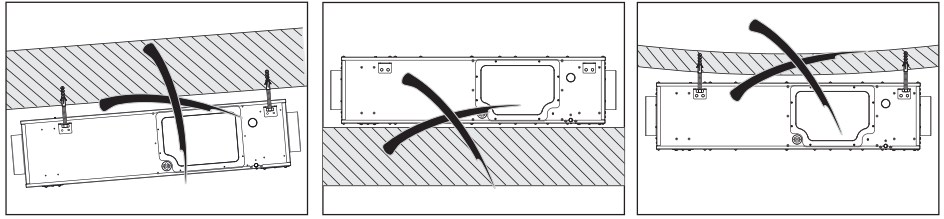
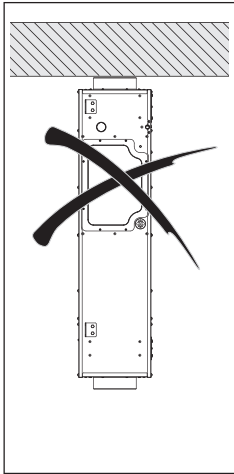
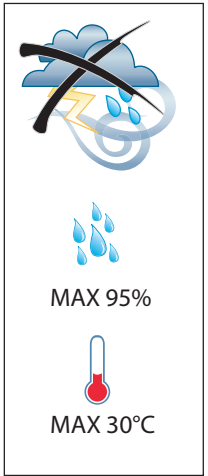
The CHR 200 FC mechanical ventilation unit includes a high efficiency counter-flow heat exchanger made of PPE (~90%). The housing, internally insulated, is made of pre-painted white galvanized steel plate and it contains two centrifugal fans, one supply fan and one extract fan, equipped with EC motor, operating at constant air flow and ensuring reduced energy consumption. CHR 200 FC is designed for horizontal false ceiling installation in small and medium-sized residential buildings, either single-detached dwellings or in block of flats. The unit is also equipped with a ISO ePM₁₀ 65% (M5) filter with ISO Coarse 50% (G2) pre-filter on the air supply line, and a ISO Coarse 65% (G4) filter on the extract line, which ensure the right protection of the heat exchanger and offer the excellent filtration of the new air introduced into the room. The CHR 200 FC mechanical ventilation unit is provided with by-pass connection for the free-cooling function and 4 NTC sensors to detect air temperature in the air inlets and outlets. Defrost function and dirty filter alarm included. All operations (ventilation, boost, economy mode, free-cooling) can be controlled by an external device (via digital input) and a suitable control panel or through Wi electronic controller (via ModBus). The CHR 200 FC unit can be combined with the DWF 200 dehumidification module in order to obtain fresh air ventilation and humidity control in the summertime. Nominal air flow 200 m³/h with 200 Pa, Air outlets Ø 160 mm, Sound pressure level at 1 m: 43.5 dB(A), Max electrical power 260 W, Size (wxhxd): 1124x267x628 mm, Weight 32,5 kg

PRINCIPLE OF OPERATION

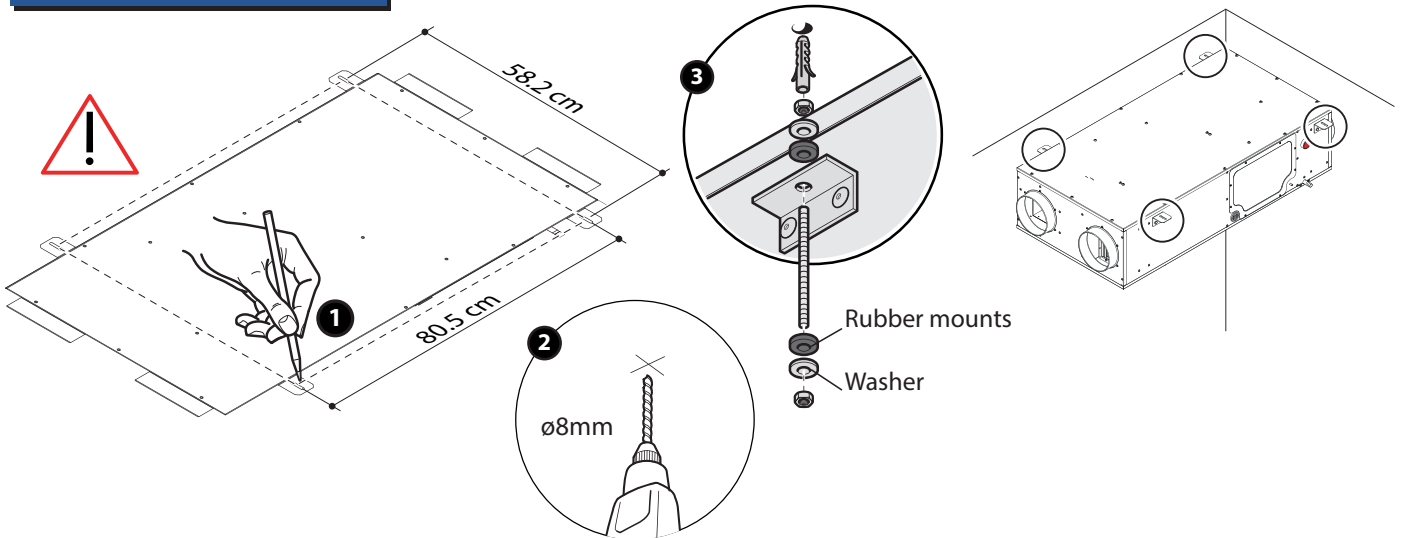


TECHNICAL DATA SHEET

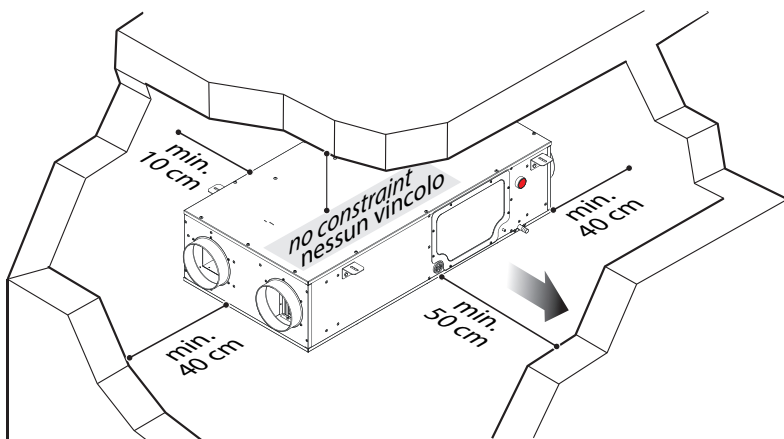
Positioning indications



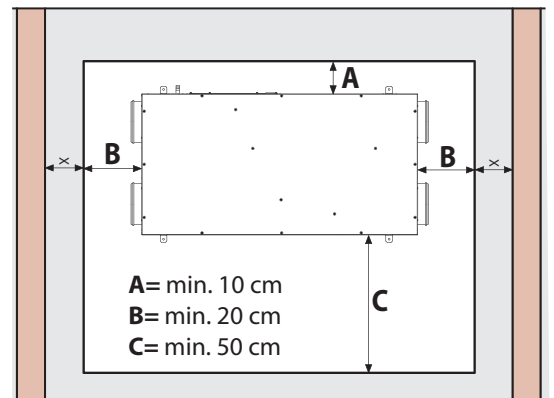
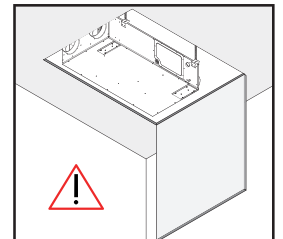
Fixing to ceiling



Minimum space allowances

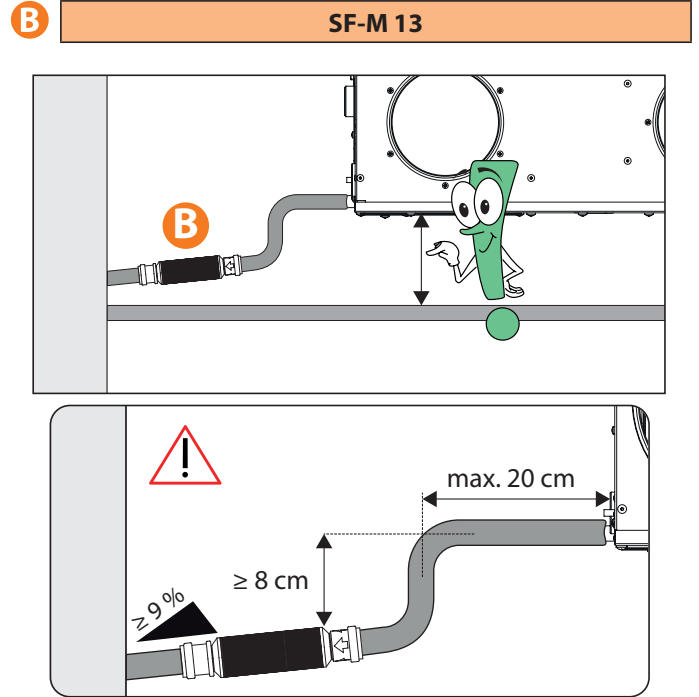
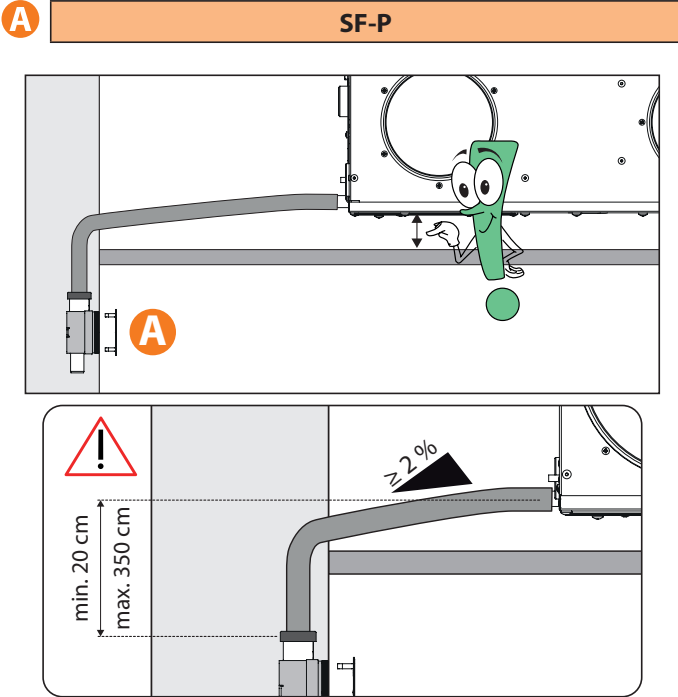


Trap door



TECHNICAL DATA SHEET

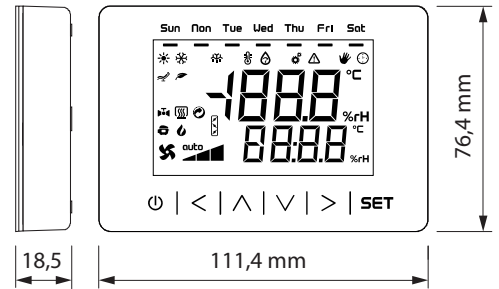
OBLIGATORY KIT FOR CONDENSATE DRAIN



CONTROL PANEL



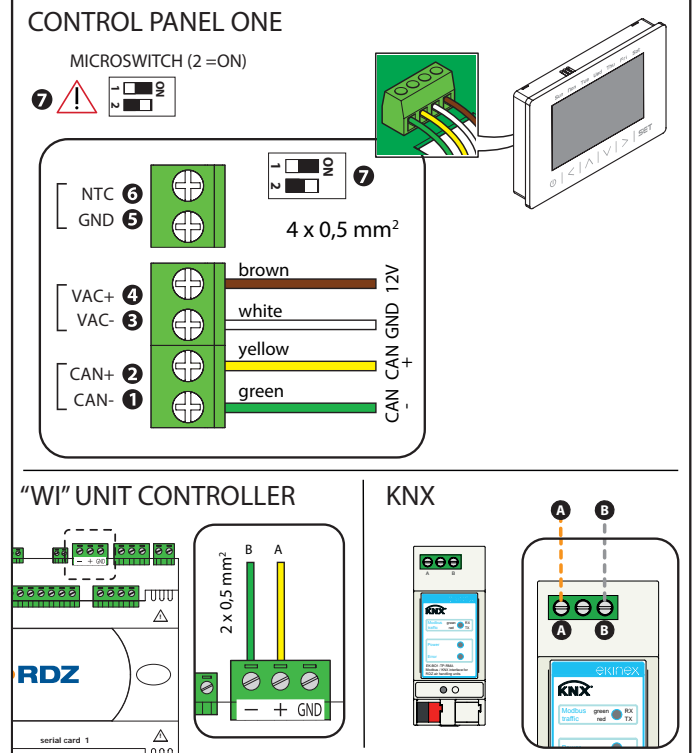
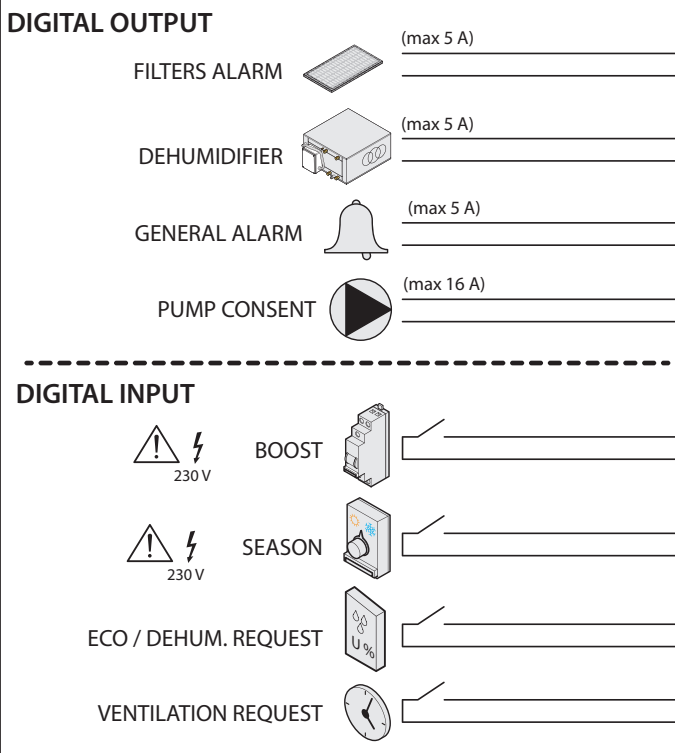
- Wall mounting without back-slot for in-wall box
- 12 VAC/DC power supply not insulated
- 1 NTC external analog input
- Alarm buzzer
- Incorporated temperature and humidity sensor
- CAN port
- Device for indoor applications



DIGITAL COMMANDS

REMOTE MODBUS CONTROLLERS

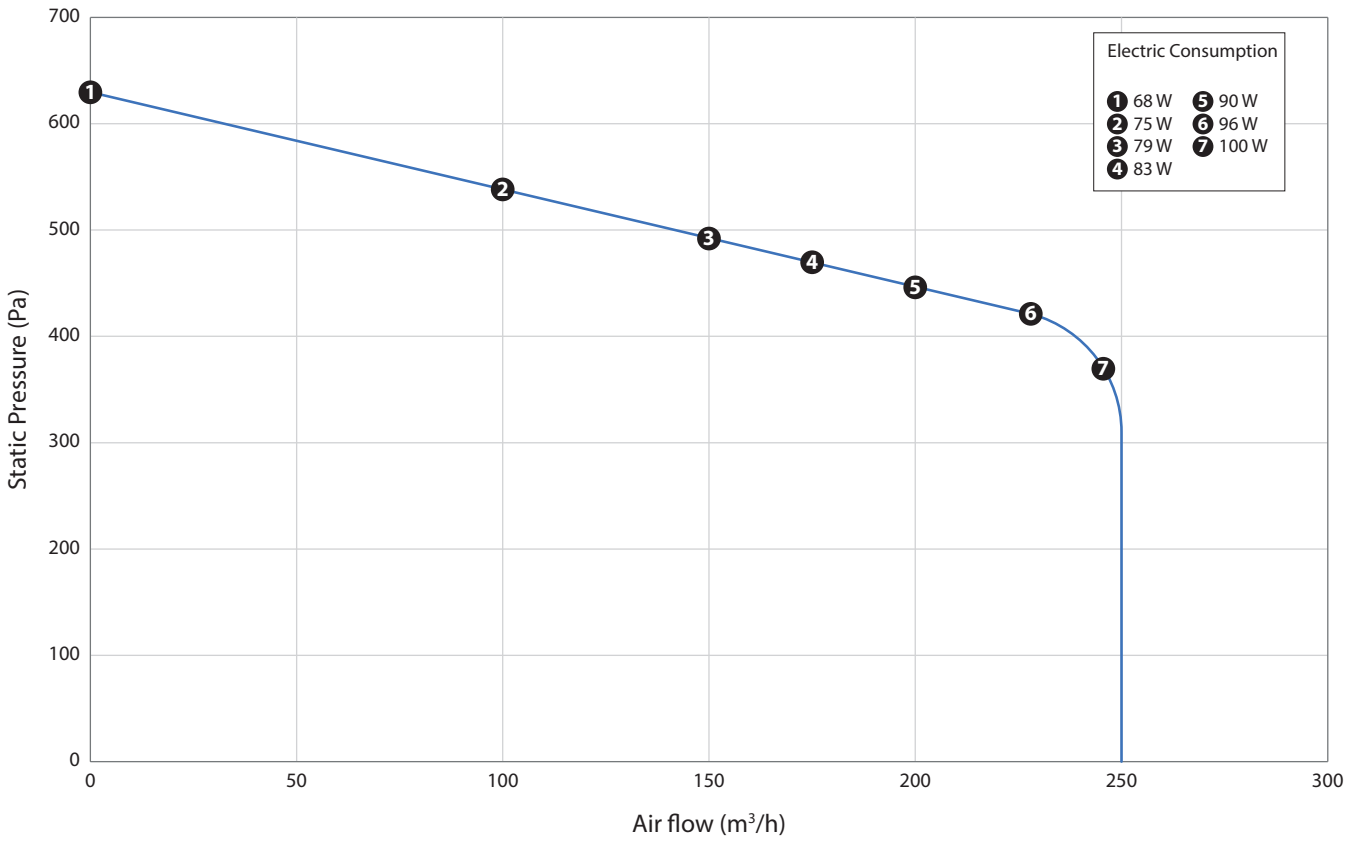
All operations (ventilation, boost, economy mode, free-cooling) can be controlled by an external device (via digital input) and a suitable control panel or through Wi electronic controller (via ModBus) or KNX interface.



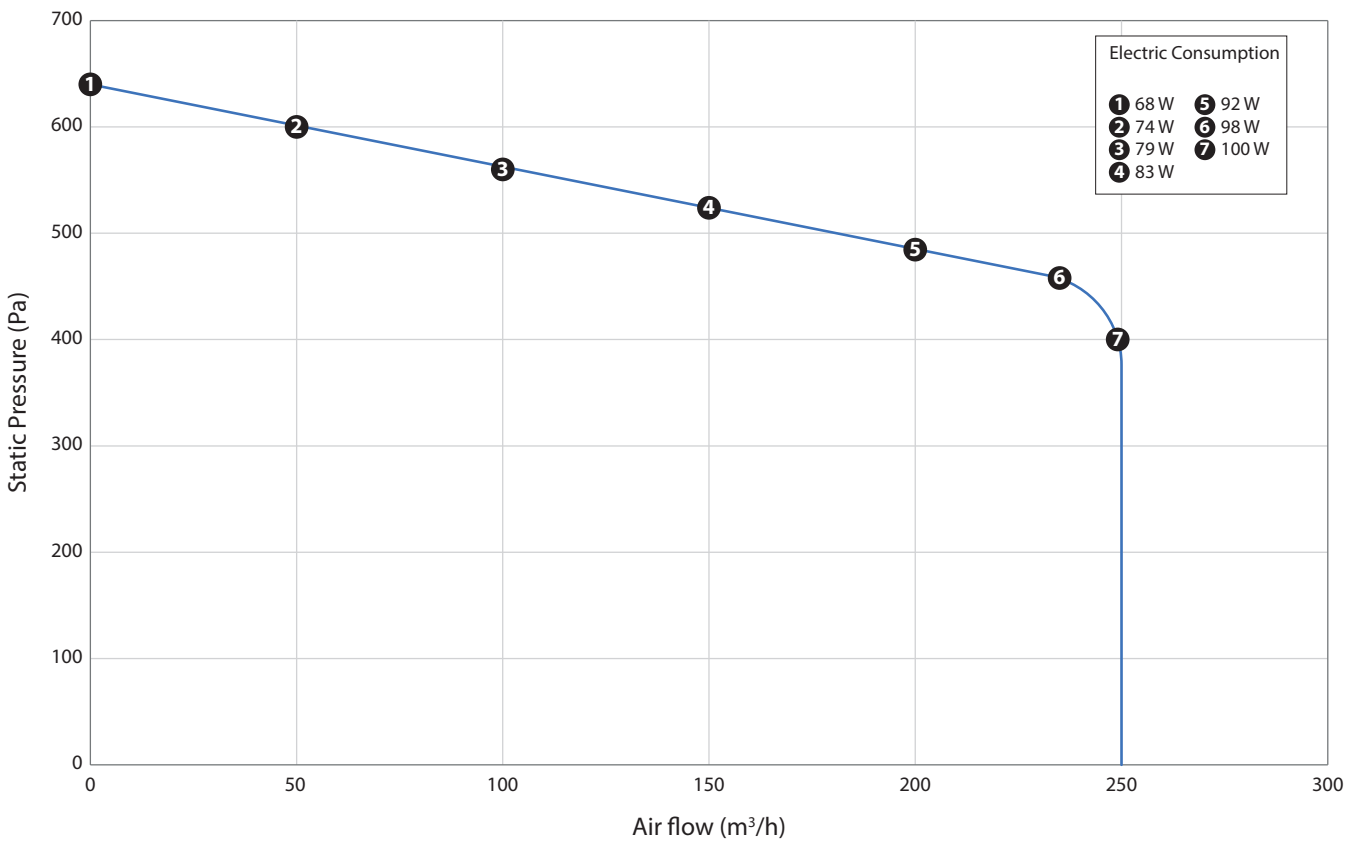
TECHNICAL DATA SHEET

FANS PERFORMANCE

Inlet Fan



Exhaust Fan



TECHNICAL DATA SHEET

PERFORMANCE ACCORDING TO COMMISSION REGULATION (EU) NO 1254/2014

European Union Commission Regulation (EU) No 1254/2014
 Ecodesign Requirements for Ventilation Units
 Annex IV Information requirements [fiche] for RVUs as referred to in Article 4(1)

- a) Manufacturer: RDZ S.p.A.
 b) Model: CHR 200-FC
 c) Specific Energy Consumption (SEC) kWh/(m²a) and Class:

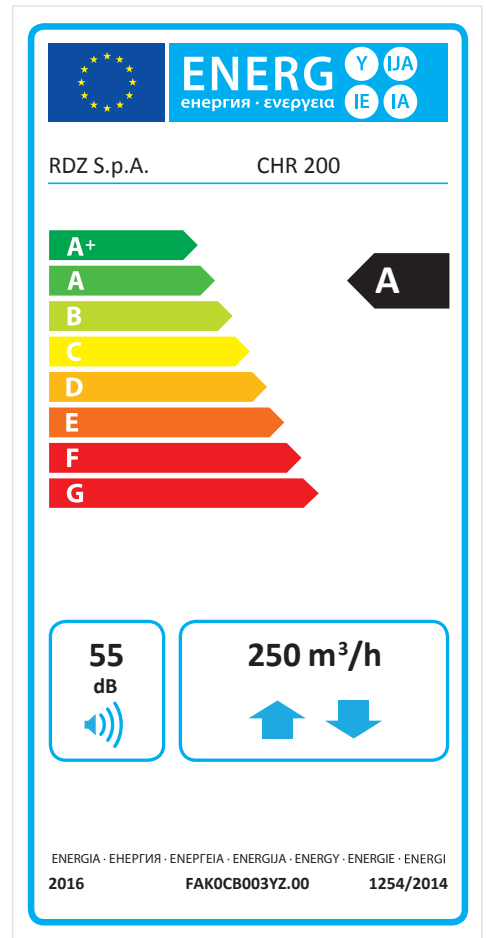
	Control typology and CTRL factor							
	Manual		Clock		Central demand		Local demand	
	1		0,95		0,85		0,65	
	SEC	Class	SEC	Class	SEC	Class	SEC	Class
Cold	-75,2	A+	-76,2	A+	-78,2	A+	-81,9	A+
Average	-37,8	A	-38,7	A	-40,2	A	-43,0	A+
Warm	-13,8	E	-14,5	E	-15,9	E	-18,2	E

- d) Article 2 typology:
 I) Residential Ventilation Unit (RVU)
 II) Bidirectional (BVU)
 e) Drive Variable speed drive
 f) Recuperative heat exchanger
 g) Thermal efficiency of heat recovery 86,3% at reference flow rate
 h) Maximum flow rate 250 m³/h at 200 Pa. This unit is for residential use only.
 i) Power input at maximum flow rate 65 W
 j) Sound power level (LWA) 55 dB
 k) Reference flow rate 0,04861 m³/s
 l) Reference pressure difference 50 Pa
 m) Reference Specific Power Input (SPI) 0,205 W/(m³/h)
 n) see c)
 o) Leakage rates at reference flow rate
 I) Maximum internal < 5%
 II) Maximum external < 5%
 p) not applicable
 q) Filter alarm reset via LED button installed on the machine
 r) not applicable
 s) Recycling disassembly instruction - go to www.rdz.it
 t) not applicable
 u) not applicable
 v) Annual electricity consumption (AEC) (in kWh electricity/a)

	Control typology and CTRL factor			
	Manual	Clock	Central demand	Local demand
	1	0,95	0,85	0,65
Cold	840	815	768	691
Average	303	278	231	154
Warm	258	233	186	109

w) the annual heating saved (AHS) (in kWh primary energy/a)

	Control typology and CTRL factor			
	Manual	Clock	Central demand	Local demand
	1	0,95	0,85	0,65
Cold	8745	8787	8872	9040
Average	4470	4492	4535	4621
Warm	2021	2031	2051	2090



RDZ S.p.A. V.le Trento, 101 - 33077 SACILE (PN) - Italy
 ☎ Tel. +39 0434.787511 📠 Fax +39 0434.787522
 ✉ info@rdz.it 🌐 www.rdz.it

FAC0CB011BZ.04 07/2021

COMPANY WITH
 QUALITY SYSTEM
 CERTIFIED BY DNV GL
 = ISO 9001 =

